



## COMPANY PROFILE 2019

Your Safety, Health and Environmental Training Academy

Leboa Investments 28 (Pty) Ltd

*The Oxford dictionary defines Nirvana as – "a state of perfect happiness"*

The design of our services is to introduce to our clients the means to achieve **Nirvana** by offering our clients a fast, efficient and proficient service.

This corporate portfolio intention is to acquaint you with the various services available from Nirvana Business solutions.

The Emergency Medical Services in South Africa are always consistently criticised by the media about the ever- rising incidents of delayed response to emergencies. The very nature of our society is responsible for this dilemma, but there is a solution for this. By ensuring that we have people trained in the working/home environment in basic first aid and basic firefighting skills, we can make the difference between life and death. A further consideration should be the training of employees in Health and Safety issues to prevent problems before they arise.

**Our management team has more than 15 years' experience in the Emergency Medical Services, Occupational Health and Safety, Risk Advisory Services and Training Industry.**

**Nirvana Business Solutions are Accredited with the Following Governing Body`s.**

Department of Labour-CI 553  
Construction Education Training Authority- 5P53568  
Transport Educations Training Authority-TETA11-191  
Board of Health Care Providers- Practice Number-011 000 0305073  
Local Government Sector Education & Training Authority (LGRS-1239-141212)  
Nirvana Business Solutions BEE recognition is 100% Level (4)  
Certificates available on request.

***Nirvana Business Solutions services are:***

- **Training Academy**
  - First Aid Training – Levels 1-3.
  - Fire Training – Basic and Advanced Fire Fighting.
  - Occupational Health and Safety Training.
  - Basic Ambulance Training.
  - Lifting Equipment.
- **24 Hours Medical Response & Medics for Sport Events**
  - 24 Hours Medical Response.
  - Medic`s for Sport Events.
- **Emergency Personnel Placements, Security Services & Emergency Vehicle Placements.**
  - Basic- Advanced Life Support Personnel.
  - Basic to Advanced Life Support Emergency Vehicles.
- **Equipment Retail & Rental services of**
  - First Aid Boxes.
  - Fire Fighting Equipment.
  - Disposable Medical Equipment.
  - Safety Equipment.
- **Health and Safety Implementation at**
  - Construction Sites.
  - Factories.
  - Offices and Workshops, full Health and Safety compliance implemented.
- **Occupational Health Care Services consisting of**
  - Primary Health Care.
  - A range of Occupational Health Care Services.
- **Real Life First Aid and Fire Simulations consisting of**
  - First Aid Simulations.
  - Fire Fighting Simulations.
  - Evacuation Drills.

### **OUR TRAINING DIVISION OFFERS THE FOLLOWING COURSES**

- Basic First Aid up to Basic Ambulance Assistant.
- Basic to Advanced Fire Fighting.
- Occupational Health and Safety courses.
- Forklift Training.
- Bulk Earth Work Equipment
- Machinery Training

### **TRAINING INFORMATION, TERMS AND CONDITIONS**

- A travelling fee of R4, 95 per km will be applicable excl. VAT if the client's venue will be utilised for the training.
- For Public courses presented at Nirvana Business Solutions Premises located in Brakpan, we can provide dates on request.
- Courses begin at 08h00 and finish by no later than 12h00 (half day) or 16h30 full day.
- Delegates are required to bring their ID books with them to the course.
- The delegate's details (names and ID numbers) will appear on the certificate as they appear on the registration control form.
- Nirvana Business Solutions and its staff or representatives cannot be held liable for any claim whatsoever of any nature arising from, or because of any training conducted or cancelled. Nirvana Business Solutions has the right to cancel or postpone any training course as required.
- Certificates will be delivered on receipt of full payment of the courses.
- Tea and coffee is available during all breaks.

### **MEDICS FOR SPORT EVENTS**

Nirvana's Special Events Management Team's focus is to provide medical, security and safety back up for any type of event. Nirvana provides emergency personnel and vehicles for school sports events, major sporting events, extreme sporting events, exhibitions, shows and corporate functions.

Just as each event is unique, the Nirvana team will ensure that the coverage afforded is equally unique, and structured to ensure cost effectiveness, efficiency, and above all peace of mind.

Staffing and logistical structures for each event are based on the individual event's unique requirements and thus will be designed to ensure that a safe and rapid treatment and transportation infrastructure will be fully available and equipped, should an emergency arise.

### **NIRVANA PERSONNEL**

Nirvana Business Solutions personnel consist of highly qualified and professional: Paramedics, Doctors, Nursing Sisters and First Aid trained staff, Risk and Occupational Health and Safety Experts, Facilitators and Assessors as well as Security personnel.

All personnel are registered with the relevant registration bodies of South Africa.

### **NIRVANA FLEET**

**Nirvana's fleet of vehicles consist of the following:**

- Basic up to Advanced Life support Ambulances.
- 4 x 4 vehicles for events that are on rough terrains.
- Quad Bikes are used by paramedics in areas where there is no access to Ambulances.
- Road Bikes for quick response.
- Speed Boat for all types of water events.

## 24 HOURS EMERGENCY MEDICAL RESPONSE

Medical Emergencies occur every day-affecting thousands of lives. The “it will never happen to me” mind-set is quickly shattered when an emergency occurs close to home or at the work place. Nirvana’s 24-hour medical responses to emergencies are designed to manage these eventualities.

Should an emergency arise, our 24-hour medical response call centre can be contacted and one of our response vehicles will be dispatched to the location of the emergency. Our paramedics and personnel on the response vehicle will then stabilise the ill or injured individual and arrange transport to the nearest most appropriate medical facility.

Pre-arranged admission and document processing can be facilitated with the receiving hospitals near to the business’s area of an operation, further lessening potential time-consuming delays in an emergency. The priority in any emergency is to get the ill/injured individual to definitive care. Nirvana is geared to manage the entire process.

The cost for this service is a monthly cost that includes the medical response and stabilization of the ill or injured on site, including employees, contractors and visitors.

## EMERGENCY PERSONNEL / EMERGENCY VEHICLE PLACEMENTS

With Nirvana Business Solutions management team tremendous wealth of experience in the Emergency Medical Services field, we are in position to take over/implement, our client’s Emergency Medical and Occupational Health and Safety teams.

This Division of Nirvana Business Solutions specialises in placing of the following workforce,

- Basic to Advanced Life Support Paramedic’s.
- Specialised Rescue Personnel.
- Occupational Health and Safety Personnel.
- Emergency Vehicles.
- Emergency treatment centre.

Each project where we place or implement any system, we fully identify all risks and required responsibilities before a placement or setup is made. By this, the resources committed to the initiative will have the maximum impact for our clients.

Below is a breakdown that can be provided to our clients pertaining to Emergency Personnel and Emergency Vehicles.

### **Option 1 - (24-Hours Intermediate Life Support Ambulance with personnel.)**

#### **Personnel:**

- 1 x Intermediate Life Support Paramedic
- 1 x Basic Life Support Paramedic

#### **Ambulance:**

- 1 x Intermediate Life Support Ambulance

### **Option 2 - (24-Hours Basic Life Support Ambulance with personnel.)**

#### **Personnel:**

- 2 x Basic Life Support Paramedics

#### **Ambulance:**

- 1 x Basic Life Support Ambulance

### **Option 3 - (24-hours Intermediate Life Support Paramedic on Site)**

In the event of an emergency a paramedic can start emergency treatment on the injured person while they wait for an ambulance. The Ambulance in this event will be called from the local emergency medical services.

A vehicle must be provided by the client that can be utilised for the paramedic to move around on the site.

#### **Equipment:**

The paramedic will be fully equipped with the following equipment; Intermediate Life support Jump bag, Oxygen, ECG, Spine Board, Head Blocks, Cervical Collar, Splints, Suction Unit, Set of BVM’s

## OCCUPATIONAL HEALTH AND SAFETY IMPLEMENTATION

Occupational Health and Safety remains on the forefront of every company's business plan. Without this vital function, businesses may just as well shut down their practices. With the Department of Labour's Zero-Tolerance it is an important aspect of all companies to ensure establishment and maintenance of OHS and / or Safety, Health and Environmental (SHE) Management Systems, addressing at least minimum statutory requirements.

### *Benefits of an effective Health and Safety system in the workplace?*

- Protection of assets and avoidance of unnecessary legal liabilities.
- Improvement of quality of life for all employees which benefits the employer.
- Financial benefits, meaning that employees and employer reaps the benefits.
- General morale and health status of employees are improved.
- Improved production standards and improved employment opportunities.
- Improved quality of products and increased market shares.
- Decrease of disabling injuries and incidents.

### *Our Service focus on the following:*

- Statutory Health, Safety and Environmental administrative requirements at the following workplaces.

#### Construction Sites:

- Management Statement.
- Health and Safety Policy.
- Health and Safety Plan.
- Copy of summary of the OHS Act.
- Risk Assessments.
- Regulator appointment.
- Training Records.
- Induction Records.
- Registers.
- Safe working procedures.
- Department of Labour Correspondence.

In addition, on construction sites, the client's sites are visited once a week, by one of Nirvana Business Solutions safety inspectors and a Health and Safety report will be retained on the site Safety File.

For Factories, Offices and Workshops, full Health and Safety Legal compliance or OHSAS 18001:2007 management systems will be implemented on a project plan with service delivery basis if so required or alternatively the client can purchase the management systems, containing the required documents and do their own implementation and auditing.

This division of Nirvana Business Solutions assists companies with Legal Compliance of the Occupational Health and Safety Act of 1993 or OHSAS 18001:2007 Management system implementation and Auditing.

Nirvana Business Solutions offer our clients all-encompassing Health and Safety as well as OHSAS 18001:2007 management systems. This service assists clients with continued legal compliance with the Occupation Health and Safety Act of 1993, Implementation and Auditing of OHSAS 18001:2007, Construction regulations, the COID Act, and the Basic Conditions of Employment Act.

Nirvana Business Solutions assist managers and supervisors, with the physical implementation of a Health and Safety or OHSAS 18001:2007 Management System.

Nirvana Business solutions appoint a qualified OHSAS 18001:2007 Lead Auditor to conduct on-site audits and to ensure administrative and physical compliance to the OHS Act of 1993 and the regulations or the requirements of the OHSAS 18001:2007 Management System. In addition, on construction sites, the client's sites are visited once a week, by one of Nirvana Business Solutions safety inspectors and a Health and Safety report will be retained on the site Safety File.

Nirvana Business Solutions assist managers and supervisors, with the physical implementation of a Health and Safety or OHSAS 18001:2007 Management System.

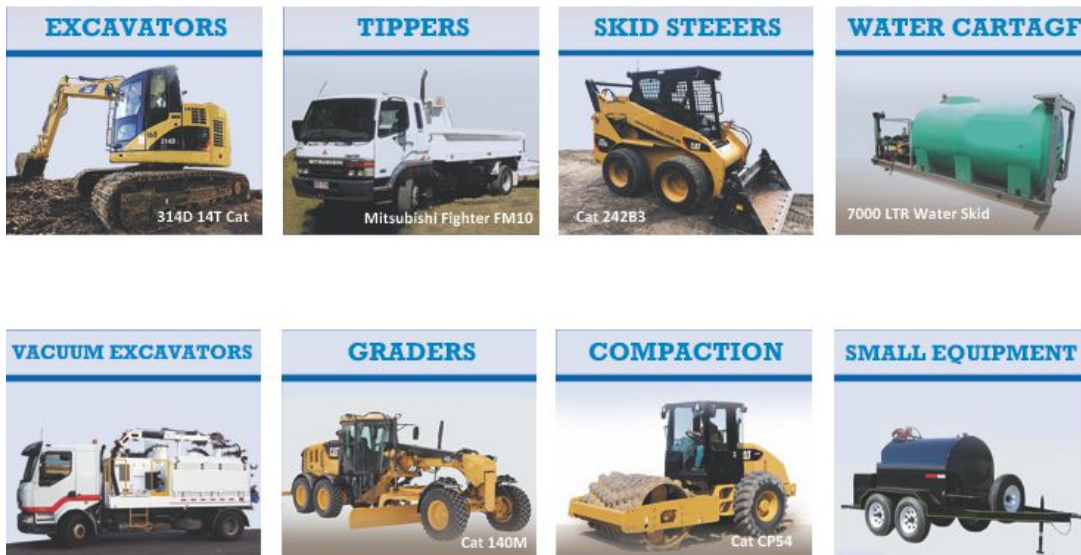
Nirvana Business solutions appoint a qualified OHSAS 18001:2007 Lead Auditor to conduct on-site audits and to ensure administrative and physical compliance to the OHS Act of 1993 and the regulations or the requirements of the OHSAS 18001:2007 Management System. In addition, on construction sites, the client's sites are visited once a week, by one of Nirvana Business Solutions safety inspectors and a Health and Safety report will be retained on the site Safety File.

## NIRVANA PLANT AND TOOL HIRE

Nirvana Tool and Plant Hire solutions, we specialise in plant hire and mining industries throughout South Africa.

Nirvana Business Solutions Plant hire has the equipment you need to get the job done, whether it's a demolition, construction project, Reno or waste removal project, or Mining Industry.

We have a number of fascist in the company and have been successfully operating for more than the last 12 Years.



## NIRVANA TRANSPORT

This division of Nirvana Business Solutions specialize in transportation of Earth Moving Equipment and Container, throw out South Africa, Botswana, Swaziland, and Namibia. We ensure a reliable, efficient and effective turnaround time to all our clients. Nirvana Business Solutions is operation since 2006 and have a number of divisions in our company ranging from Plant Hire, Training Academy and Ambulance services.

Our fleet consist of medium Vehicles 4-8 tons, Super links with drop sides, Flat Beds, Low beds, Tipper Trucks, etc.

## NIRVANA ON-SITE AND SITE-BASED MEDICAL SERVICES

Nirvana's Site Based Emergency Medical Services is designed to manage these eventualities.

Having on site Emergency Medical Services is of critical importance, to ensure that there is no delay in providing effective Medical treatment to injured or sick employee's on site in case of and emergencies and get them to a medical facility ASAP, especially on remote sites.

With Nirvana Business Solutions management team tremendous wealth of experience in the Emergency Medical Services field, we are in position to take over / implement, our client's Emergency Medical and Occupational Health and Safety teams.

Our personnel and paramedics are experienced and has expertise is in the following industries. (But not limited)

- Coal Mines, Construction Sites.
- Energy, Wind Farms, Solar Farms, High Power lines.
- Shopping Malls, Holiday resorts, Aviation etc.

As each site and industry is unique and have similar requirements, a Risk Assessment and a needs analysis is conducted before placement and recommendations are made ensuring that by this, the resources committed will have the maximum impact for our clients, and that all legislative and Health and Safety requirements are met.

### EQUIPMENT RETAIL AND RENTAL

This division of Nirvana Business Solutions offers a full range of Medical Equipment ranging from, Basic to Advanced Life Support equipment, First Aid Kits, Ambulance Equipment, Fire Fighting Equipment. We offer a full range of disposable medical equipment.

FACTORY WORKSHOP KIT Med Metal Box Regulation 3	FACTORY WORKSHOP KIT Large Plastic Box	MOTORIST KIT 140N
46cm x 33cm x 15cm 8 x First Aid Dressings 4 x Disposable Gloves 100 x Swabs 2 x Antiseptic Wound Cleaners 8 x Bandages 2 x Resuscitators 4 x Triangular Bandages 1 x Elastic Adhesive 1 x Plaster Strip 12 x Safety Pins 2 x Straight Splints 10 x Sterile Swabs 2 x Cotton wool 1 x Metal Forceps 1 x Non-Allergenic Adhesive Tape 1 x 16cm Metal Universal Scissors	8 x First Aid Dressings 4 x Disposable Gloves 100 x Swabs 2 x Antiseptic Wound Cleaners 8 x Bandages 2 x Resuscitators 4 x Triangular Bandages 1 x Elastic Adhesive 1 x Plaster Strip 12 x Safety Pins 2 x Straight Splints	10 x Headache Tablets 10 x Plasters 1 x 50ml Antiseptic Liquid 1 x 30g Antiseptic Cream 1 x 5ml Eye drops 1 x Pair Latex Gloves 1 x Cotton wool 1 x Eyecup 1 x 50mm Bandage 1 x 75mm Bandage 1 x Triangular Bandage 3 x Safety Pins 1 x Met

### OCCUPATIONAL HEALTH CARE SERVICES

This division of Nirvana Business Solutions executes two types of services that are Primary Health Care and Occupational Care Services, identifying occupational disease and managing them according to the OHS and COID Acts.

Furthermore, to provide information to the production manager determining measures to eliminate, control and minimise health risk and hazards to which employees are or may be exposed.

#### Primary Health Care Services

- HIV voluntary counselling and testing (Funded by AURUM RESEARCH INSTITUTE)
- Diabetic monitoring
- Blood pressure monitoring
- Wound care
- Pap smear
- Pregnancy test
- Blood sample collection e.g. HIV, cholesterol etc.
- Physical examination
- Insertion and removal of stitches
- Family planning

#### Occupational Health Care Services

- Pre-employment,
- Periodic,
- Exit medical screening,
  - Specialising in
  - Lung function test (spirometry) and Hearing test (audiometry).

### History

- Past medical history
- Past occupational history
- Family history
- Personal history

### Physical Examination

- General Physical Assessment
- Urine test
- Blood pressure monitoring
- Temperature, Pulse and Respiration
- Height, Weight
- Eye Test
- Examination: Ear, Nose and Throat
- Auscultation: Chest, ear, Lungs, Abdomen
- Palpation: Abdomen, Lower extremities
- Hearing test if necessary
- Lung Function test if necessary

## FIRST AID AND FIRE SIMULATIONS

This division of Nirvana Business Solutions specialises in real life simulations that range from First Aid injuries, To Fire and Evacuation drills.

After completing the training the first aider and fire fighter on site, do not get the exposure to practise what they have learned during this training. By having regular simulations these people get the opportunity to implement and practise what they have learned ensuring that should a real emergency arise that they will be able to fully manage the scenario.

Our team consists of highly qualified people that monitor the learners during the simulation, a report is drafted after the simulation, and feedback is given.



### CONTACT DETAILS & COMPANY INFORMATION

NATIONAL NUMBER

**0861 EMS NOW or 0861 367 669**

EAST RAND BRANCH | HEAD OFFICE

Tel: 0861 367 669 / 011 740 2928 / 011 740 9507 | Fax: 086 510 6557

Email: [info@nirvanabs.co.za](mailto:info@nirvanabs.co.za) • Website: [www.nirvana.co.za](http://www.nirvana.co.za)

Leboa Investments 28 Pty (Ltd) t/a Nirvana Business Solutions - Registration Number: 2007/018163/07  
PO Box 11343, Brakpan, 1545 – Address: 111 Voortrekker Road, Brakpan, 1540

Banking Details: FNB (First National Bank) Acc# 62729512401 • Branch: Brakpan • Branch Code: 250542